

# Freshwater Invertebrate Key – General

## MAYFLY NYMPHS



Mayfly nymphs come in a variety of shapes and sizes, from left to right, a flattened stone clinger (Heptageniidae) actual size 1 – 1.5cm, a moss creeper (Ephemerellidae) actual size 0.5 – 1cm, a burrower (Ephemeridae) actual size 2 - 3 cm and an active swimmer (Baetidae) actual size 0.5 – 1cm. All have gills on the rear of the body and 3 tails.

## CASED AND UNCASED CADDIS FLY LARVAE



Caddis fly larvae fall into 2 main categories. Cased, like the Caddis fly larvae on the left (actual size 2 – 3cm), and case-less, like the Caddis fly larvae on the right (actual size 1 – 2cm).

## STONEFLY NYMPHS



Stonefly nymphs are easily identified as they always have slender bodies and 2 tails. They vary in size from a few mm to 3 or 4 cm.

## FRESHWATER SHRIMP



The curved shape and of the Freshwater Shrimp makes it easy to identify (actual size 1 – 2cm).

## WATER SLATER



Hog Lice, or Water Slaters as they are also known, greatly resemble their close relative the Wood Louse. Hog Lice are usually 0.5 to 1.5cm long.

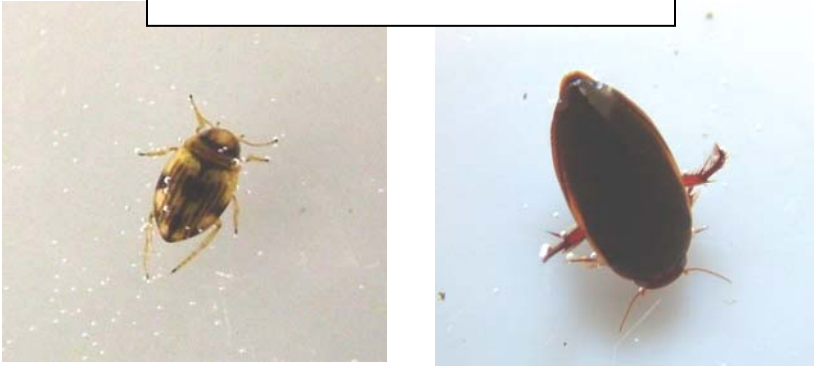
## DAMSELFLY NYMPH



Damselfly nymphs (above) and Dragonfly nymphs (not shown) normally prefer slow or still water. Most Damselfly nymphs are 2 to 3cm long.

## *Freshwater Invertebrate Key – General*

### AQUATIC BEETLES



Freshwater beetles are often found in invertebrate samples, but are rarely recorded in very large numbers. Beetles vary in size from a few millimetres to 4 or 5 centimetres.

### LEECHES



Leeches (above) and worms (not shown) are very common in almost all types of freshwater.

### FRESHWATER SNAILS



Freshwater Snails come in a wide variety of shapes and sizes, from left to right, a Pea Mussel, a Ramshorn Snail and a Bladder Snail. Most Snails prefer slow flowing or still water. (Freshwater Limpets have been left out of this key as they strongly adhere to rocks and are therefore very rarely encountered when kick sampling.)

### TRUE FLY LARVAE



True fly larvae come in a variety of shapes and sizes. On the left is a Crane fly larvae (actual size 1 – 2cm) and on the right is a non-biting Midge larvae, which is also known as a bloodworm (actual size 0.5 – 1cm).

### WATER BOATMEN



Lesser Water Boatmen, or Corixas as they are often known, are common on slow moving or still waters (actual size 0.5 to 1.5cm).